

311 R.V. - Self-Leveling Silicone Sealant

NuFlex
SEALANTS

NEUTRAL CURE SILICONE TECHNICAL DATA SHEET

NuFlex® 311 R.V. Self-Leveling (SL) Silicone Sealant is a **flowable**, one-part, neutral-cure, elastomeric silicone sealant that cures to form a durable, flexible, low modulus seal. The self-leveling property means reduced labor costs since tooling is not required.

FEATURES & TYPICAL USES:

NuFlex® 311 R.V. Self-Leveling (SL) Silicone Sealant is used to seal around items that penetrate the roof of recreational vehicles and trailers. Easy to use and flows around screw heads. No tooling required. Sticks to most common substrates used in recreational vehicle construction without the use of primers. Fast cure-through time allows exposure to the elements within 2 hours. Sealant will remain permanently flexible.

SURFACE PREPARATION & APPLICATION:

All surfaces must be dry and frost-free, free of oil, grease, rust, dirt or other contaminants that may inhibit proper adhesion. Most substrates do not require a primer before application of the **NuFlex® 311 R.V. Self-Leveling (SL) Silicone Sealant**. It is recommended, however, that test samples of sealant be applied to the surfaces to test and verify adhesion. After the preparatory work is completed, mask where necessary to avoid spillage on to adjoining surfaces. Masking tape should be removed immediately after the sealant application is completed.

CAUTION:

Use in well ventilated areas and avoid breathing vapors. On contact, uncured sealant irritates eyes. Flush eyes with lukewarm water. Call physician. Avoid skin contact and do not ingest. **Keep out of reach of children.** For complete safety information, consult the Material Safety Data Sheet. Standard silicones may not be used to join sensitive natural stones such as marble, granite or quartz, as this may cause staining at the joint edges

SHELF-LIFE & STORAGE:

NuFlex® 311 R.V. Self-Leveling (SL) Silicone Sealant shelf life is 12 months from date of shipment from our plant when stored in a clean dry area with temperatures between 5°C and 32°C (40°F to 90°F). For best results, keep the sealant in tightly closed containers when not in use.

LIMITATION:

NuFlex® 311 R.V. Self-Leveling (SL) Silicone Sealant should not be used on vertical joints. In confined cure conditions, NuFlex® neutral cure sealants may: 1) Discolor brass, copper or other sensitive metals. 2) Stress craze polycarbonate.

MANUFACTURED BY:

NUCO INC. T: 519.823.4994 TF: 1.800.853.3984
150 Curtis Drive F: 519.823.1099 E: sales@nucoinc.com
Guelph, ON N1K 1N5



FORM: 311.RV_TDS.DOC

REV.: 2 DATE: 05/16



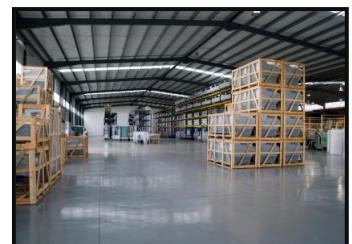
FEATURES:

- 100% Silicone.
- Self-Leveling technology.
- 100% RTV.
- Freeze-thaw stable.
- Self-leveling neutral cure.
- Adheres to most common substrates used in the construction of recreational vehicles.

AVAILABLE SIZES & COLOUR:

- 300 mL (10.1 fl.oz.) cartridge
- 12 cartridges per case
- 144 cases per skid (300 mL)
- Available in larger sizes*
- Available colors include: RV white only.

*Special order items may require lead times and minimum order quantities.



www.NuFlex.com

SPECIFICATIONS:

Due to the number of types of surfaces (especially TPO and EDPM roof membranes) coatings and treatments available, pre-testing for adhesion is recommended to eliminate potential problems and to determine proper surface preparation.

TYPICAL PROPERTIES:

These values are not intended for use in preparing specifications. Spec Writers; please contact NUCO Inc. before writing specifications if any further information is required.

Description	Specification
As Supplied...	
Type:	One part, self leveling silicone sealant
Cure Method:	Neutral, moisture cure
Specific Gravity:	1.36
Working Time at 25°C (77°F) and 50% R.H. - in minutes:	10 Minutes
Application Temperature Range:	-29°C to 50°C (-20°F to 122°F)
Full Cure / Adhesion Time at 25°C (77°F) at 50% R.H.:	14 – 21 Days
As Cured...	
100% Modulus (ASTM D 421) MPa (psi):	0.21 (30)
Tensile Strength (ASTM D 412) MPa (psi):	1.2 (175)
Elongation (ASTM D 412):	600%
Tear Strength (ASTM D624, die 'C'):	4.9 (28)
Hardness (ASTM C 661, Shore A):	12
Joint Movement Capability:	+/- 25%
Service Temperature Range:	-51°C to 149°C (-60°F to 300°F)

DISCLOSURE

The information and data contained herein is BASED ON INFORMATION WE BELIEVE TO BE RELIABLE. Please read all statements, recommendations or suggestions herein in conjunction with our CONDITIONS of SALE which apply to all goods supplied by us. We assume no responsibility for the use of these statements, recommendations or suggestions, nor do we intend them as recommendation for any use which would infringe any patent or copyright.

WARRANTY INFORMATION:

NUCO Inc., warrants only that its product will meet its specifications. NUCO shall in no event be liable for incidental or consequential damage. NUCO's liability, expressed or implied is limited to the stated selling price of any goods found to be defective.

MANUFACTURED BY:

NUCO INC. T: 519.823.4994 TF: 1.800.853.3984
 150 Curtis Drive F: 519.823.1099 E: sales@nucoinc.com
 Guelph, ON N1K 1N5

